

PRESSURE FILTER - PD CETOP MOUNTED

Pressure (ISO 10771-1:2002)

Max. working: 31,5 MPa (315 bar)
 Test: 47 MPa (470 bar)
 Bursting: 95 MPa (950 bar)
 Collapse, differential for the filter element (ISO 2941): series standard 2 MPa (20 bar)
 series H+ 21 MPa (210 bar)

Working Temperature

From -25° to +110° C

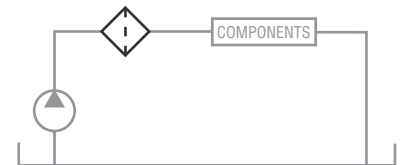
Compatibility (ISO 2943:1999)

Full with fluids: HH-HL-HM-HV-HTG (according to ISO 6743/4)
 For fluids different than the above mentioned, please contact our Sales Department.



Materials

Head: Cast iron
 Bowl: Steel
 Bypass valve: Steel
 Seals: NBR Nitrile (FKM - on request fluoroelastomer)
 Indicator housing: Brass



HOUSINGS

Body Size	Connection	Flow Rate Max Lpm	Price £	Price €
FPD01	CETOP 03	5 Lpm	ON REQUEST	
FPD02	CETOP 03	5 Lpm	ON REQUEST	
FPD12	CETOP 05	14 Lpm	ON REQUEST	
FPD21	CETOP 07	40 Lpm	ON REQUEST	
FPD22	CETOP 07	40 Lpm	ON REQUEST	

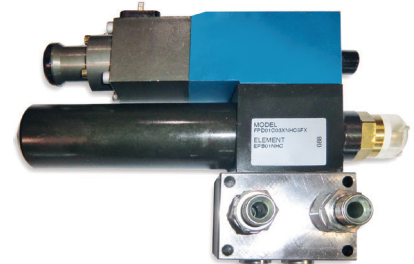
Above body without bypass valve - Not available on this series

FOR ELEMENT PART NUMBER

- E** - ELEMENT
- PB** - FILTER FAMILY SERIES
- 01** - FILTER HOUSING SIZE
- HA** - ELEMENT MEDIA

Example: Part **EPB11CC** : element in 5 micron fibre media for a size "01" housing

Application Example



ELEMENT to be added

Element	Filtration	Size 01	Size 02	Size 12	Size 21	Size 22
HA	5 micron			ON REQUEST		
HB	7 micron			ON REQUEST		
HC	12 micron			ON REQUEST		
HD	21 micron			ON REQUEST		

210 BAR COLLAPSE PRESSURE NON BYPASS HOUSING CAN BE USED

For flowrates please refer to the clean filter pressure drop flow rate tables

CLOGGING INDICATOR

		£	€
NONE - PLUGGED	03	ON REQUEST	
VISUAL BUTTON	5F	ON REQUEST	
ELECTRICAL	6F	ON REQUEST	
ELECTRICAL WITH LED	7F	ON REQUEST	
ELECTRICAL WITH THERMOSTAT	T3	ON REQUEST	
VISUAL & ELECTRICAL	73	ON REQUEST	

8 BAR
CRACKING PRESSURE



PRESSURE FILTER - PD CETOP MOUNTED

Ordering Codes - Filter

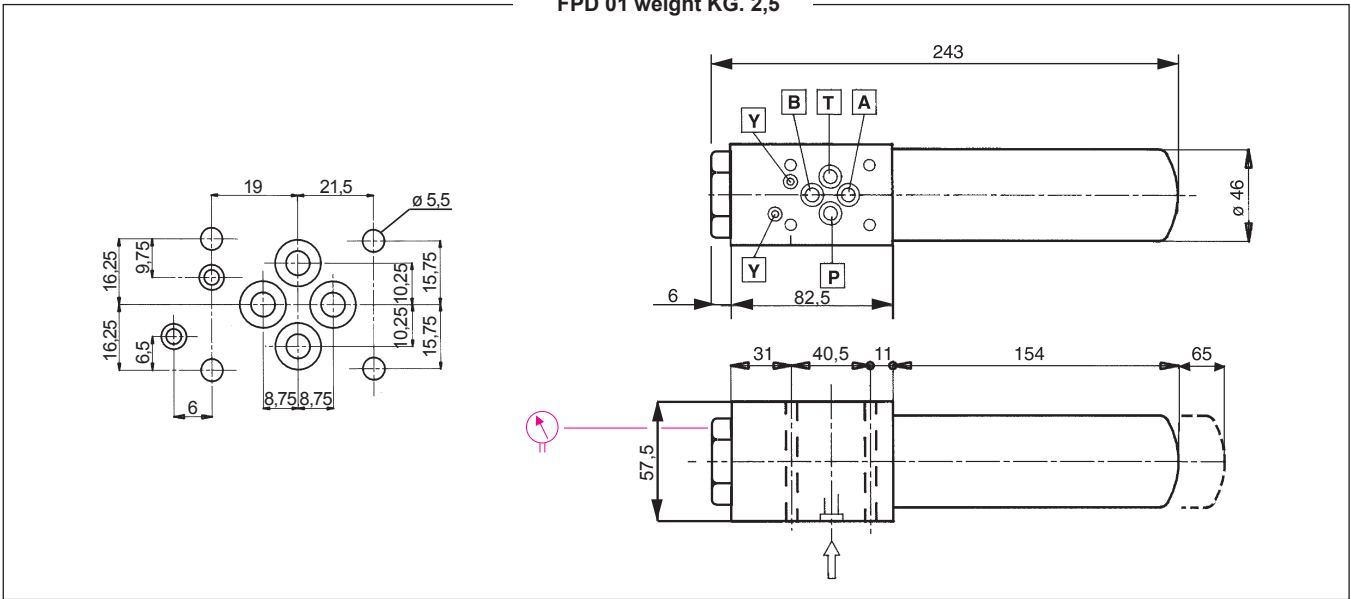
<input type="checkbox"/>		Type					
		F = Filter Complete	F	F	F	F	F
		B = Filter Housing	B	B	B	B	B
<input type="checkbox"/>	<input type="checkbox"/>	Family, Nominal Size, Length	01	02	12	21	22
<input type="checkbox"/>	<input type="checkbox"/>		01	12	12		
<input type="checkbox"/>		Port Type					
		C = CETOP interface	C	C	C	C	C
		Y = bowl side B	Y	Y	-	-	-
<input type="checkbox"/>	<input type="checkbox"/>	Port Size					
		03 = CETOP 3 (size 6)	03	03	-	-	-
		05 = CETOP 5 (size 10)	-	-	05	-	-
		07 = CETOP 7 (size 16)	-	-	-	07	07
<input checked="" type="checkbox"/>	<input type="checkbox"/>	Bypass Valve - not available	X	X	X	X	X
<input type="checkbox"/>		Seals					
		N = NBR Nitrile	N	N	N	N	N
		F = FKM Fluoroelastomer	F	F	F	F	F
<input type="checkbox"/>	<input type="checkbox"/>	Filter Media					
		HA = Fibre 5 μ m _(c) β >1.000 Δ p 21MPa (210 bar)	HA	HA	HA	HA	HA
		HB = Fibre 7 μ m _(c) β >1.000 Δ p 21MPa (210 bar)	HB	HB	HB	HB	HB
		HC = Fibre 12 μ m _(c) β >1.000 Δ p 21MPa (210 bar)	HC	HC	HC	HC	HC
		HD = Fibre 21 μ m _(c) β >1.000 Δ p 21MPa (210 bar)	HD	HD	HD	HD	HD
<input type="checkbox"/>	<input type="checkbox"/>	Clogging Indicator					
		03 = port, plugged	03	03	03	03	03
		5F = visual differential 800 kPa (8 bar)	5F	5F	5F	5F	5F
		6F = electrical differential 800 kPa (8 bar)	6F	6F	6F	6F	6F
		7F = indicator 6F with LED	7F	7F	7F	7F	7F
		T3 = elect. diff. 800 kPa (8bar) with thermostat 30°C	T3	T3	T3	T3	T3
<input checked="" type="checkbox"/>	<input checked="" type="checkbox"/>	Accessories XX = no access available	XX	XX	XX	XX	XX

Ordering Codes - Element

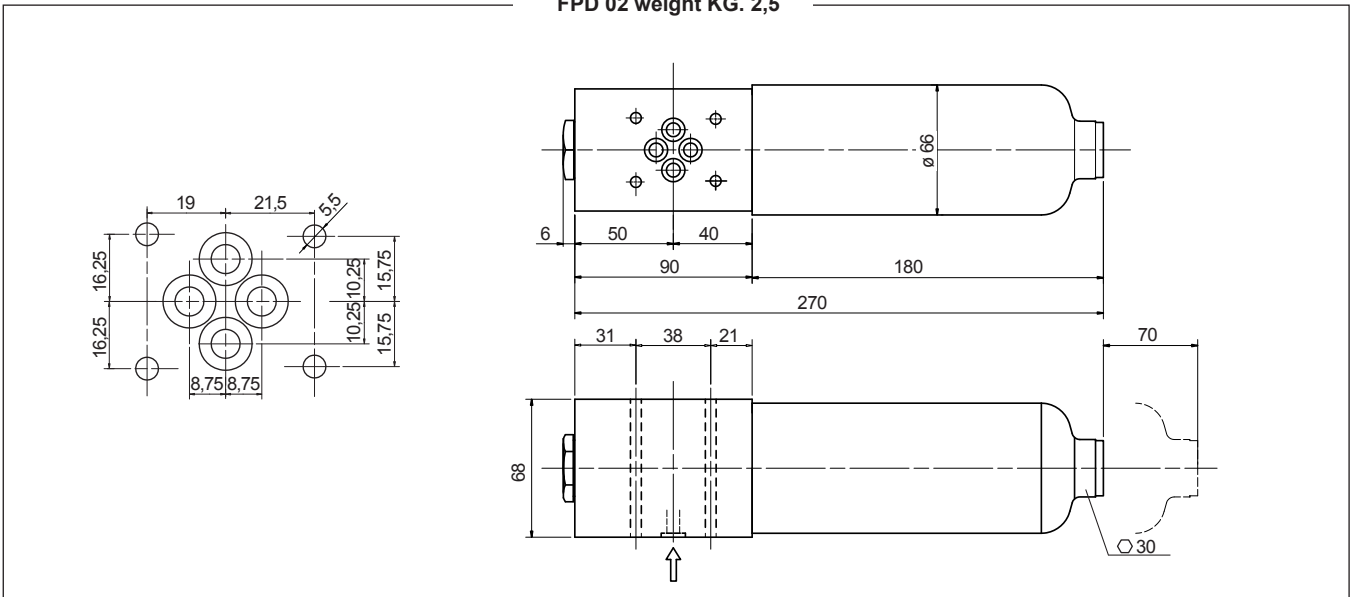
<input type="checkbox"/>		E	Element					
<input type="checkbox"/>	<input type="checkbox"/>	Family, Nominal Size, Length	01	02	12	21	22	
<input type="checkbox"/>	<input type="checkbox"/>		01	12	12			
<input type="checkbox"/>		Seals						
		N = NBR Nitrile	N	N	N	N	N	
		F = FKM Fluoroelastomer	F	F	F	F	F	
<input type="checkbox"/>	<input type="checkbox"/>	Filter Media						
		HA = Fibre 5 μ m _(c) β >1.000 Δ p 21MPa (210 bar)	HA	HA	HA	HA	HA	
		HB = Fibre 7 μ m _(c) β >1.000 Δ p 21MPa (210 bar)	HB	HB	HB	HB	HB	
		HC = Fibre 12 μ m _(c) β >1.000 Δ p 21MPa (210 bar)	HC	HC	HC	HC	HC	
		HD = Fibre 21 μ m _(c) β >1.000 Δ p 21MPa (210 bar)	HD	HD	HD	HD	HD	

PRESSURE FILTER - PD CETOP MOUNTED

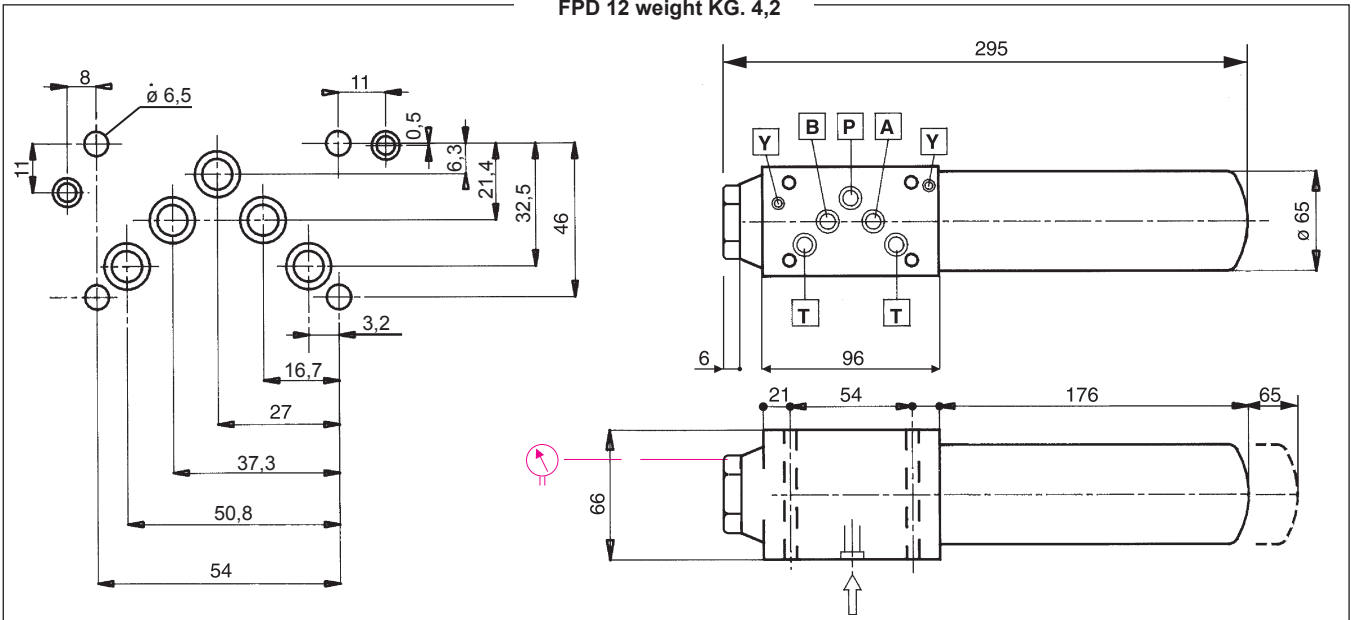
FPD 01 weight KG. 2,5



FPD 02 weight KG. 2,5

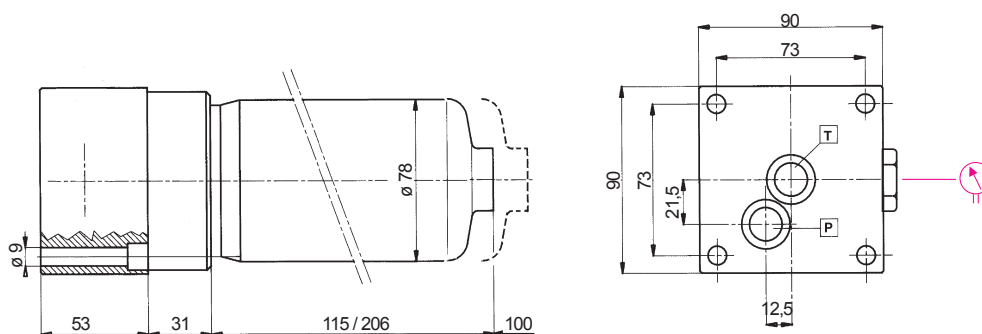


FPD 12 weight KG. 4,2



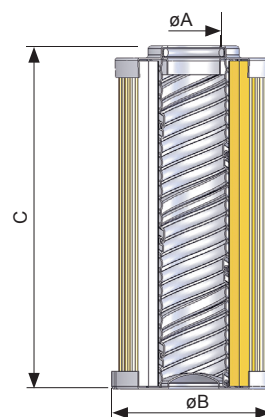
PRESSURE FILTER - PD CETOP MOUNTED

FPD 21 weight KG. 4 - FPD 22 weight KG. 5,5



Dimensions (mm) - FILTER ELEMENT

	A mm	B mm	C mm	Weight kg	Area (cm ²) Media H+ A B C
EPB01	16	33	100	0.14	270
EPB12	25	45	115	0.55	475
EPB21	23.5	52	115	0.40	975
EPB22	23.5	52	210	0.55	1,785

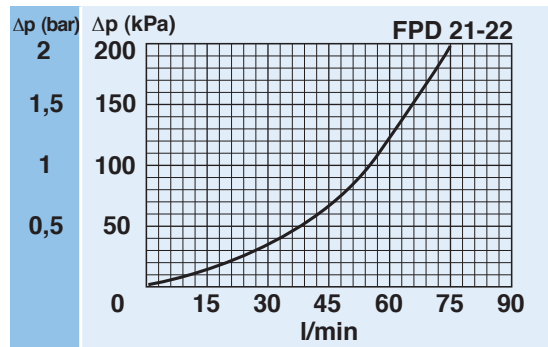
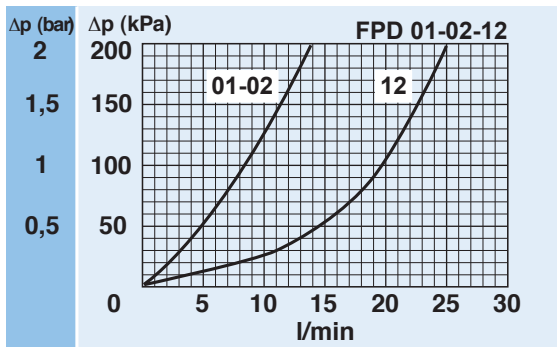


PRESSURE FILTER - PD CETOP MOUNTED

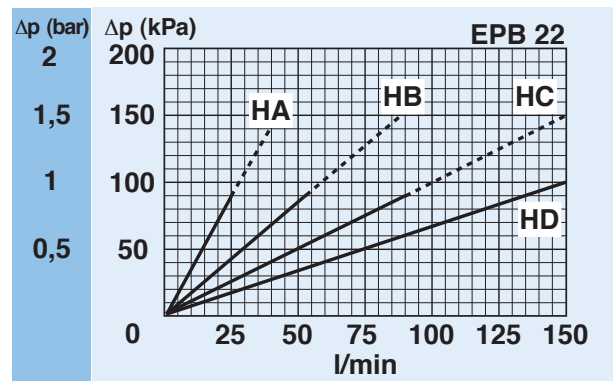
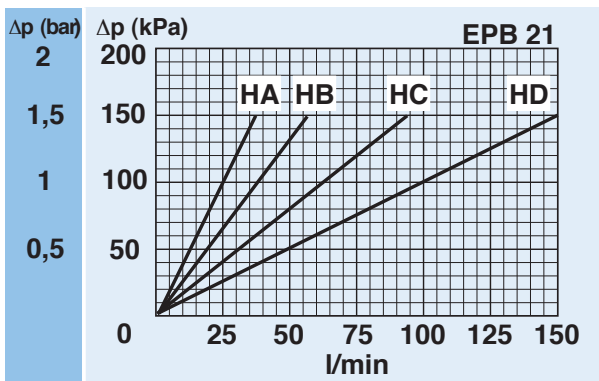
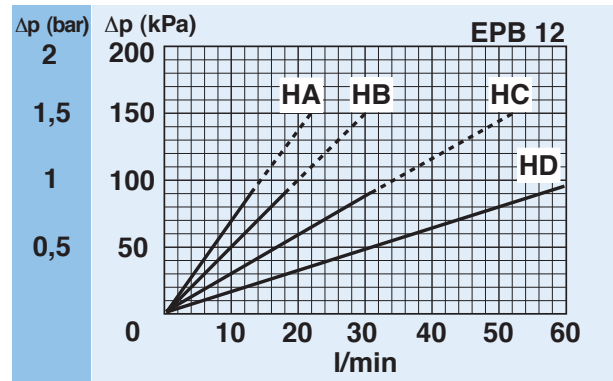
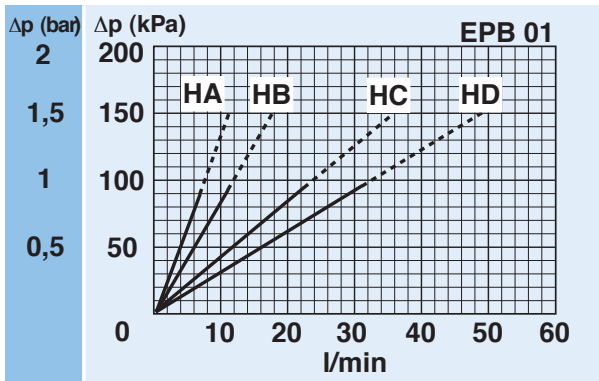
PRESSURE DROP CURVES (Δp)

The "Assembly Pressure Drop (Δp)" is obtained by adding the pressure drop values of the Filter Housing and of the Clean Filter Element corresponding to the considered Flow Rate and it must be lower than 120 kPa (1,2 bar).

FILTER HOUSING PRESSURE DROP (mainly depending on the port size)



CLEAN FILTER ELEMENT PRESSURE DROP WITH H+ MEDIA (depending both on the internal diameter of the element and on the filter media)



PRESSURE FILTER - PD CETOP MOUNTED

CLOGGING INDICATOR

A visual or visual-electrical differential indicator is available as an option and allows monitoring of the element conditions, giving an exact indication of the right time to replace the element.

FILTER HOUSING

The head and the bowl by extruded steel ensure the best fatigue resistance to the working pressures.

FILTER ELEMENT

The filter element is manufactured with filter medias selected in the UFI laboratory and mechanically supported to maintain the highest performances even at high differential pressures.

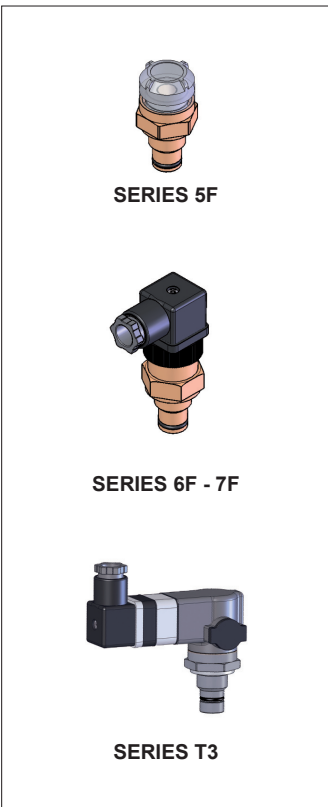
SEAL GUARANTEED

A perfect O-ring seal is always ensured as it is not dependent on the tightening torque applied to the bowl.

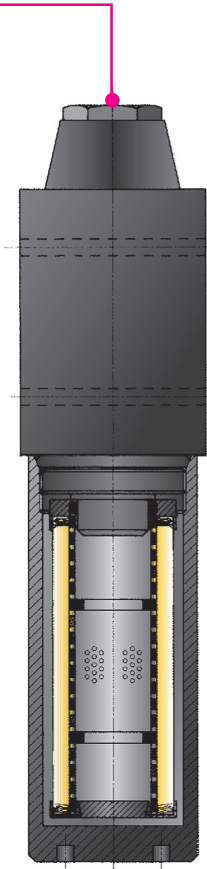
EASY ASSEMBLING

The CETOP head allows for modular assembly that is compact and leak free.

CLOGGING INDICATOR



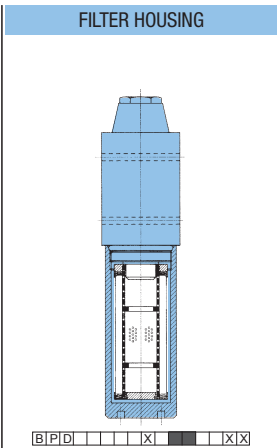
Differential



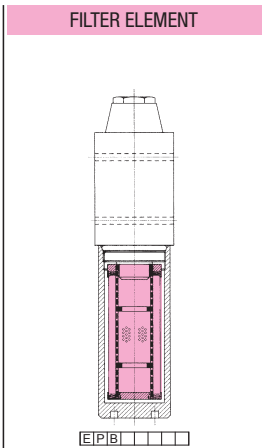
SPARE SEAL KIT

	NBR	FKM
FPD01	521.0005.2	521.0073.2
FPD02	521.0107.2	521.0108.2
FPD12	521.0071.2	521.0074.2
FPD21	521.0072.2	521.0028.2
FPD22	521.0072.2	521.0028.2

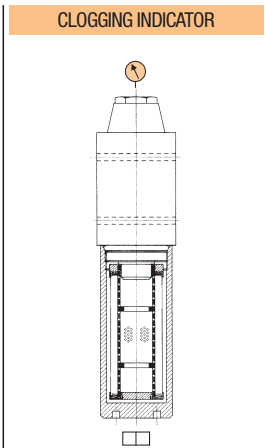
FILTER HOUSING



FILTER ELEMENT



CLOGGING INDICATOR



SPARE PARTS ELEMENTS
(For filling up see table
"Ordering and option chart")