

UOW PORTABLE FILTRATION

Includes:

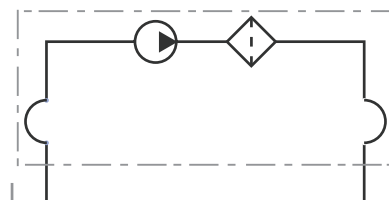
INLET	flexible hose, 2m long with rigid end 0.5m long
OUTLET	flexible hose, 2m long with rigid end 0,5 m long
'Y' type filter	for pump protection
Gear pump 40 l/min	with inbuilt 1 MPa (10 bar) relief valve
Electric motor	three phase 380V - 0.75 kW 1450 rpm - IP54
Double handle	for proper and easy transportation

MODEL UOW040T0075A3

Oil transfer and filtration package of clean and compact construction, joining high filtration performances and long life filter element to a easy and handy use. The filter can be fitted with a visual or electrical clogging indicator, also of differential type.

The filter element, having a wide filtration area (12.800 cm²) and excellent efficiency features, is normally available with filtration degree 5, 7, 12 and 21µm(c) (βx > 1.000) and WR (Hydro Dry).

Total weight 50 kg.



SYSTEM CARE

Application Example



Ouw Portable Filtration Package Trolley

Article no.	Description	Price £	Price €
UOW01	Three phase motor 380v	ON REQUEST	

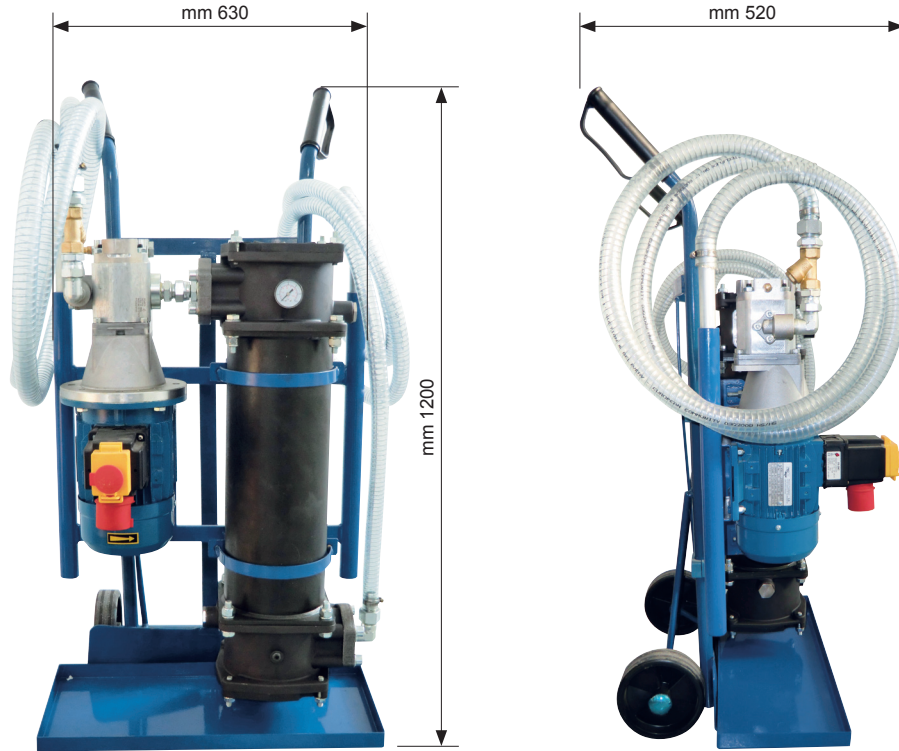
ELEMENT to be added

Element	Filtration	Price £	Price €
ERF34NFA	5 micron	ON REQUEST	
ERF34NFB	7 micron	ON REQUEST	
ERF34NFC	12 micron	ON REQUEST	
ERF34NFD	21 micron	ON REQUEST	
ERF34NCC	10 micron	ON REQUEST	
ERF34NWR	Water Removal	ON REQUEST	

CLOGGING INDICATOR

	Description	Price £	Price €
5B	Visual pop up	ON REQUEST	
6B	Electrical	ON REQUEST	
7B	Electrical with lamp	ON REQUEST	
T0	Electrical with Thermostat	ON REQUEST	
70	Electrical & visual	ON REQUEST	

UOW PORTABLE FILTRATION



ORDERING AND OPTION CHART

U	TYPE
	U = filtration unit
O	W
	Wheeled type
0	4
	NOMINAL FLOW RATE
	040 = 40 l/min
	ELECTRICAL MOTOR TYPE
	T = three phases (standard)
	M = single phase (optional)
0	0
	7
	5
	NOMINAL POWER
	0075 = 0,75 kW
A	3
	VERSION
	A3 = standard version

FILTER ELEMENT								
	A	B	C	kg	Area (cm ²)			
					Media F+	Media C+	Media M+	
ERF34	92	126	480	2,20	12.800	15.400	5.250	

E	TYPE
	E = ELEMENT
R	F
	3
	4
	FAMILY, SIZE & LENGTH
N	SEALS
	N = NBR Nitrile
	FILTER MEDIA
FA	FA = fiber 5 μm ₀ β >1.000
FB	FB = fiber 7 μm ₀ β >1.000
FC	FC = fiber 12 μm ₀ β >1.000
FD	FD = fiber 21 μm ₀ β >1.000
CC	CC = cellulose 10 μm β >2
WR	WR = water removal (*)

(*) Water removal media see "hydro-dry" brochure