

### DIRECT SOLENOID VALVE SV32

#### DESCRIPTION

3/2 way solenoid valves are available as single station units and they are designed for use with compressed air, mainly applied where on-off control is required with pneumatic actuators.

OPTIONS: Other versions under request.

USE: Pneumatic actuator control, among others.

#### AVAILABLE MODELS:

SV32C – direct acting.  
SV32H – pilot operated.

#### SIZES AND

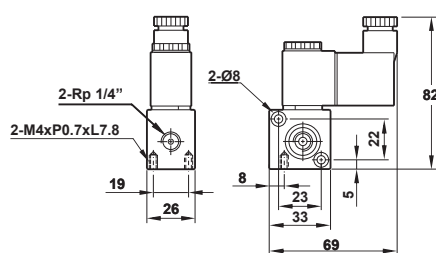
CONNECTIONS: 1/4" female threaded ISO 7 Rp.

#### INSTALLATION:

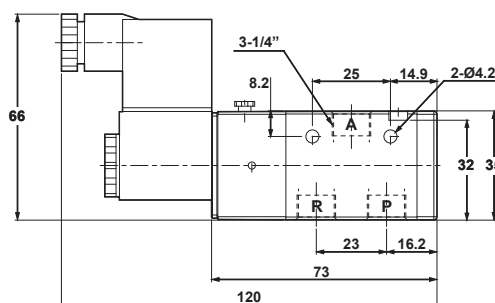
In any position.  
See IMI – Installation and maintenance instructions.



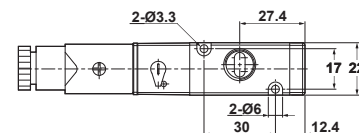
#### DIMENSIONS



SV32C



SV32H



TECHNICAL DATA		
TYPE	SV32C	SV32H
Body material	Aluminium alloy	
Sectional area	1,5 mm <sup>2</sup>	16 mm <sup>2</sup>
Action	Direct acting with spring return	Internal pilot
Operating pressure	0 to 8 bar	
Maximum proof pressure	10 bar	
Ambient temperature	-10 °C to 60 °C	
Duty cycle	100% ED	
Coil type	DIN	
Protection class	IP 65 (DIN 40 050)	
Insulation class	F	
Voltage tolerance	±10%	
Standard voltages	220 V AC, 110 V AC, 24 V DC	
Net weight	0,16 kg	0,18 kg